



*late Clube do Rio de Janeiro*

## **29th Rio de Janeiro International Sailing Week**

**11<sup>th</sup> to 14<sup>th</sup> of July**

**CLASSES: 49er, 49erFX e RS:X (Men, Women and Young)  
(SOUTH AMERICAN 49er, 49erFX CHAMPIONSHIP)**

**15<sup>th</sup> to 18<sup>th</sup> of July**

**CLASSES: Nacra 17, Finn, Laser and Laser Rad. (Men and Women)**

**19<sup>th</sup> to 22<sup>th</sup> of July**

**CLASSES: 470 (Men and Women)**

**Organization:**

**late Clube do Rio de Janeiro**

**Support:**

**Confederação Brasileira de Vela**

**Federação de Vela do Estado do Rio de Janeiro**



# Yacht Club de Rio de Janeiro

## SAILING INSTRUCTIONS

[DP] denotes a rule for which the penalty is at the discretion of the International Jury.

[NP] denotes that a breach of this rule will not be grounds for a protest by a boat

### 1. RULES:

- 1.1. The race will be governed by the rules as defined in The Racing Rules of Sailing.
- 1.2. Class rules apply, except those governing on conditions for organizing and conducting Championships Class.

### 2. NOTICE TO COMPETITORS:

- 2.1. Notices to competitors will be posted on the official Notice Board, located near the stairs to the Race Office.

### 3. AMENDMENTS TO SAILING INSTRUCTIONS:

- 3.1. Any change in the Sailing Instructions will be posted by 10 am the day they take effect, except that any change in the format or the schedule of races, which will be affixed before 20:00h of the day before the day it will take effect.

### 4. SIGNALS ASHORE:

- 4.1. Signals ashore will be hoisted on the main mast of the event, located on the main pier of embarkation and disembarkation.
- 4.2. When the AP pennant is hoisted ashore, "1 minute" is replaced with "not less than 60 minutes" to the Escola Naval areas and Pão de Açúcar and "not less than 75 minutes" to the area of the Bridge Ponte in race signal AP of the RRS.

### 5. SCHEDULE:

5.1 The schedule is as follows:

49er FX, 49er e RS:X (Men, Women and Young)		
Date	Time	Activity
11 <sup>th</sup> - Monday	9 am to 11 am	Registration
	12h	Racing 49er FX, RS:X (Men, Women and Young)
12 <sup>th</sup> - Tuesday	12h	Racing 49er FX, RS:X (Men, Women and Young)
13 <sup>th</sup> - Wednesday	12h	Racing 49er, RS:X (Men, Women and Young)
14 <sup>th</sup> - Thursday	12h	Racing 49er, RS:X (Men, Women and Young)
	After race	Awards Ceremony

PS: 49er FX – July 11<sup>th</sup> and 12<sup>th</sup>, 49er – July 13<sup>th</sup> and 14<sup>th</sup>

Nacra 17, Finn, Laser and Laser Rad. (Men and Women)		
Date	Time	Activity
15 <sup>th</sup> - Friday	9 am to 11 am	Registration
	12h	Racing
16 <sup>th</sup> - Saturday	12h	Racing
17 <sup>th</sup> - Sunday	12h	Racing
18 <sup>th</sup> - Monday	12h	Racing
	After race	Awards Ceremony

470 (Men and Women)		
Date	Time	Activity
19 <sup>th</sup> - Tuesday	9 am to 11 am	Registration
	12h	Racing
20 <sup>th</sup> - Wednesday	12h	Racing
21 <sup>th</sup> - Thursday	12h	Racing
22 <sup>th</sup> - Friday	12h	Racing
	After race	Awards Ceremony

5.2 Number of races scheduled per class:

Classes	Number of races	Races per day
Nacra 17, 49er e RS:X (Men, Women and Young)	12	Max. 3
49er e 49er FX	6	Max. 3
470	10	2
Finn, Laser, Laser Radial (Men and Women)	8	2

5.3 For Classes: Nacra 17, 49er, 49erFX and RS: X (Men, Women and Young) three races are scheduled per day, and for other classes two races are scheduled per day. Except for the RSX classes (Mac., Fem. and Young), an extra race can be raced, provided the schedule is not advanced more than one race per day.



# Yacht Club de Rio de Janeiro

5.4 The scheduled time of the warning signal for the first race each day is at 12:00.

5.5 There will be no starts after 16:20 on 14, 18 and 22, July 2016.

5.6 To alert the competitors that a race or sequence of races will begin shortly, the orange flag of the starting line will be hoisted with a warning signal on the mast of the RC signals vessel for at least four minutes before the first warning signal class of that race. Lack of this signal is no reason for a request for redress by any competing boat.

## 6. CLASS FLAGS:

6.1	CLASSES:	FLAGS:
	49er	Symbol 49er on white background.
	49er FX	Symbol 49er FX on pale blue background
	RS:X (Men)	Symbol RS:X on white background.
	RS:X (Women) & RS:X (Young)	Symbol RS:X on yellow background
	Nacra 17	Symbol Nacra on white background
	Finn	Symbol Finn Class on white background
	Laser	Symbol Laser on white background
	Laser Rad. (Men & Women)	Symbol Laser with letter "R" on white background.
	470 (Men)	Symbol 470 on white background
	470 (Women)	Symbol 470 on pale blue background

## 7. RACE AREAS:

7.1. The sailing areas are shown in Annex 1, Dimensions are approximate and not in scale.

7.2 The race committee may reassign a class to any area not later than two hours before the scheduled time of the warning signal for the first race of the day. However:

- When the AP pennant is hoisted on land, the race area can be changed up to 30 minutes before the pennant AP be removed; and
- When the AP pennant is hoisted on water, the race area can be changed. A race committee boat will display the LIMA flag over the flag of the affected class and will go to the new race area.

## 8. COURSES

8.1. The diagrams in Annex 2 show the courses, including their identification codes, the sequence in which the marks are to be passed, and the side on which should be left with the angles and distances, approximate, at the discretion of the race committee.

## 9. MARKS:

9. 1. The marks are:

- **CLASSES: Nacra 17, Finn, 49er and 49er FX**

Marks 1, 2, 3 and 4 are orange inflatable buoys

Alteration – Alteration – orange inflatable buoys with black band

- **CLASSES: RS:X (Men, Women and Young), , Laser and Laser Rad. (Men and Women) and 470 (Men and Women)**

Marks 1, 2, 3 and 4 are yellow cylindrical buoys

Alteration – yellow inflatable buoys with black band

9.2 The starting and finishing marks will be the race committee boat and a triangular inflatable Yellow (Nacra 17, Finn, 49er and 49er FX) and Orange (**RS:X (Men, Women and Young), , Laser and Laser Rad. (Men and Women) and 470 (Men and Women)**) buoy on the other end.

## 10. START:

10.1 The starting line will be between a staff displaying an orange flag on the race committee vessel at the starboard end and either

10.1.1 the course side of the port-end inflatable starting mark, or

10.1.2 a staff displaying an orange flag on the race committee vessel at the port end.

10.2 [DP] A buoy may be attached to the race committee starting vessel anchor line just below keel depth. Boats shall not pass between this buoy and the race committee starting vessel at any time. This buoy is part of the race committee starting vessel ground tackle.

10.3 [DP] When a starting sequence is in progress, boats whose warning signal has not been made shall avoid the starting area. The starting area is defined as the area 50 meters from the starting line and marks in all directions.

10.4. A boat starting after the expiration of four (4) minutes from the starting signal will be considered as having no departed - DNS. This changes the rule A4.



# *Sate Clube do Rio de Janeiro*

10.5. If the U flag was exposed as preparatory signal, no part of the hull of a boat, crew or equipment shall be in the triangle formed by the ends of the starting line and the first mark during the last minute before her starting signal. If a boat breaks this rule and is identified, he will be disqualified without a hearing, but will not be punished if the race is postponed or abandoned before departure, or if restarted resailed. The individual call does not apply. The scoring abbreviation for this offense is UFD. This changes the A11 rule, scoring abbreviations.

## **11. COURSE CHANGES:**

11.1. To change the position of the next leg of the course, the race committee will lay a new mark (or move the finishing line) and remove the original mark as soon as possible. When in a subsequent change of course a new mark is replaced, it will be replaced by an original mark.

11.2. Except a gate, boats shall pass between the race committee boat signaling the change of course and the mark that is nearby, leaving the mark to port and the RC boat regattas to starboard. This changes the rule 28.

## **12. FINISH:**

12.1. The finish line will be between the staff displaying an orange flag on the boat and the race committee:

- a) the arrival mark (inflatable buoy) that is near (on the other end), or
- b) a staff with an orange flag on a race committee boat at the other end.

12.2. If upon arrival the race committee displays an ALFA flag, it means that there will be not another race.

## **13. PENALTY SYSTEM:**

13.1. **[NP] [DP]** A boat that fulfilled penalty under rule 44.1 must fill out a form at the race office within protest time of that day.

13.2. Appendix P will be applied P.

13.3. For Nacra classes, 49er and 49er FX, rule 44.1 and P2.1 are changed by replacing the Punishment of the Two Turns Penalty One Lap.

## **14. TARGET LIMITS AND TARGET TIMES:**

14.1. For opening series, time limits and target times in minutes are as follows:

<b>Class</b>	<b>Time Limit</b>	<b>Mark 1 time limit</b>	<b>Finish Window</b>	<b>Target time</b>
Finn, Laser, Laser Radial F, 470 (M/W)	90	25	15	50
Nacra, 49er and 49er FX	50	20	10	30
RS:X (M/W/Y)	50	20	10	20-25

14.2. If no boat has passed the mark 1 within the time limit, the race will be abandoned. A failure to achieve the objective time will not be reason for redress. This alters Rule 62.1 (a).

14.3. Boats will be scored as DNF without a hearing if they do not reach the defined time window after the finish first place in its class. This changes the rules 35, A4 and A5.

## **15. PROTESTS AND REQUESTS FOR REDRESS:**

15.1. **[NP] [DP]** Protest forms are available at the Race Office. Protests and requests for redress or reopening shall be there within the appropriate time limit.

15.2. Boat protests on eligibility and class rules shall be submitted by the deadline of protests of the day 22<sup>th</sup> of July, 2016.

15.3. For all classes the protest delivery time will be 60 minutes after the arrival of the race committee of their classes in the race headquarters.

15.4 The same limit time for protests in item 16.3 applies to all protests of the race committee and the jury about incidents they observe in the racing area and for requests for redress. This changes the rule 61.3 and 62.2.

15.5 If the rule N1.4 (b) applies, the time limit for requesting a hearing under that rule is 30 minutes after being informed of the jury's decision.

15.6. Notices to competitors will be posted on the Official Notice Board within 30 minutes after the end of the period of protests in order to inform them of hearings in which they are parties or named as witnesses. The hearings will be held in Jury Room, located at the Race Office.

15.7. Notices of protests by the Race Committee or Jury will be posted for the information of boats, under rule 61.1 (b).

15.8. A list of boats that have been penalized for breaking rule 42 will be published in accordance with the instruction 14.2.

15.9. Infringements of items 2 and 13 of the NoR or the items in this race instruction marked with **[NP]** will not be reason for protest or request for redress by a boat. This changes the rule 60.1 (a).

15.10. Penalties for breaches of items 2 and 13 of Regattas notice, to class rules or items in this race instruction marked with **[DP]** are at the discretion of the Jury. A boat can accept a discretionary penalty before the hearing of the incident by completing a form available at the Race Office.



# *Late Clube do Rio de Janeiro*

15.11. On the last day of the regatta a request for reopening a hearing shall be delivered:

(A) the delivery of protests if the requesting party was informed of the decision the previous day;

(B) no more than 30 minutes after the requesting party was informed of the decision that day. This changes the rule 66.

15.12. On the last day of the regatta, a request for redress by action of the Jury shall be delivered no later than 30 minutes after the decision was published. This changes the rule 62.2.

## **16. SCORING SCORE:**

16.1. The Low Point System of Appendix A of the RRS will apply.

16.2. A minimum of 03 (three) races in the initial series must be completed to constitute a series. If five (05) or more races have been completed there will be one discard.

## **17. [NP] [DP] SECURITY MEASURES:**

17.1. A boat that withdraws from a race shall notify the race committee as soon as possible.

17.2. Competitors must carry on board personal flotation equipment for the crew during the entire time they are racing and it is recommended to be used during the whole competition or observing the specific rules of each class

## **18. [NP] [DP] REPLACEMENT OF CREW OR EQUIPMENT:**

18.1. Substitution of competitors will not be allowed without prior written permission of the race committee.

18.2. The replacement of damaged or lost equipment will not be allowed unless authorized by the race committee. Replacement request must be made to the race committee at the first reasonable opportunity.

## **19. [NP] [DP] MEASUREMENT AND EQUIPMENT INSPECTION:**

A boat or equipment may be inspected at any time for compliance with the rules of the classes and Sailing Instructions. In the water, a boat can be requested by a race committee equipment inspector or measurer to proceed immediately to a designated area for inspection.

## **20. OFFICIAL BOATS:**

20.1. The official boats will be identified as follows:

Race Committee Vessel - orange flag with "CR" in blue

Jury Boats - yellow flag with "JURY" black.

Press - white flag with a "PRESS" in black.

20.2 Actions of official boats will be no reason for repair. This changes RRS 60.1 (b).

## **21. [NP] [DP] SUPPORT BOATS:**

21.1. Support boats must be registered in the Race Office before 18:00h on 23<sup>rd</sup> of July 2015.

21.2. Team leaders, coaches and support staff should stay out of areas where boats are racing from the first class preparation signal until all boats have arrived or the race committee signals delay, general recall or cancellation.

## **22. [NP] [DP] GARBAGE DISPOSAL:**

22.1. The waste may be placed on Race Committee Vessel or official boats.

## **23. [NP] [DP] BERTHING:**

23.1. It will not be mandatory permanence of the boats at the late Clube do Rio de Janeiro. But boats that choose to stay at the club, at time and place described below:

CLASSES	PLACES	DATE OF PERMANENCE
49er, 49erFX	HANGAR 1	9 <sup>th</sup> to 15 <sup>th</sup> of July
RS:X (Men, Women and Young)	HANGAR 3	
Nacra 17, Laser e Laser Rad. (Men and Women).	HANGAR 1	13 <sup>th</sup> to 19 <sup>st</sup> of July
Finn	HANGAR 3	
470 (Masc. e Fem.)	HANGAR 3	17 <sup>th</sup> to 23 <sup>st</sup> of July

23.2 Stopping place for ships technicians and support in ICRJ.

23.2 (a) From the 11<sup>th</sup> of July 2016, all boats in support of sailors including technicians, who remain berthed at ICRJ during the championship, should be on the outer pier (8) ICRJ the pool according to the attached drawing. Failure to comply with the docking site will result in the addition of 05 (five) points for all of the corresponding boat team.

23.2 (b) Only the boats of the members of ICRJ that are not participating (directly or indirectly) of the event will be berthed in the dock of the Club.





# *Yacht Club de Rio de Janeiro*



## **24. [NP] [DP] RADIO COMMUNICATION**

25.1 Except in an emergency, a boat shall neither make radio transmissions while racing nor receive communications not available to all boats. This restriction also applies to mobile phones.

## **25. [NP] [DP] PRIZES:**

25.1. Prizes will be awarded to the 1st, 2nd and 3rd places in each class.

25.2. The Prize Giving Ceremony (classes, day and time) will be as per Item 5.1 of the SI and held at the club.

## **26. DISCLAIMER:**

26.1. Competitors participate in the regatta entirely at their own risk. See rule 4, Decision to Race. The Organizing Authority will not accept any liability for material damage, physical or death directly related to a series of races and / or its antecedents during or after completion.

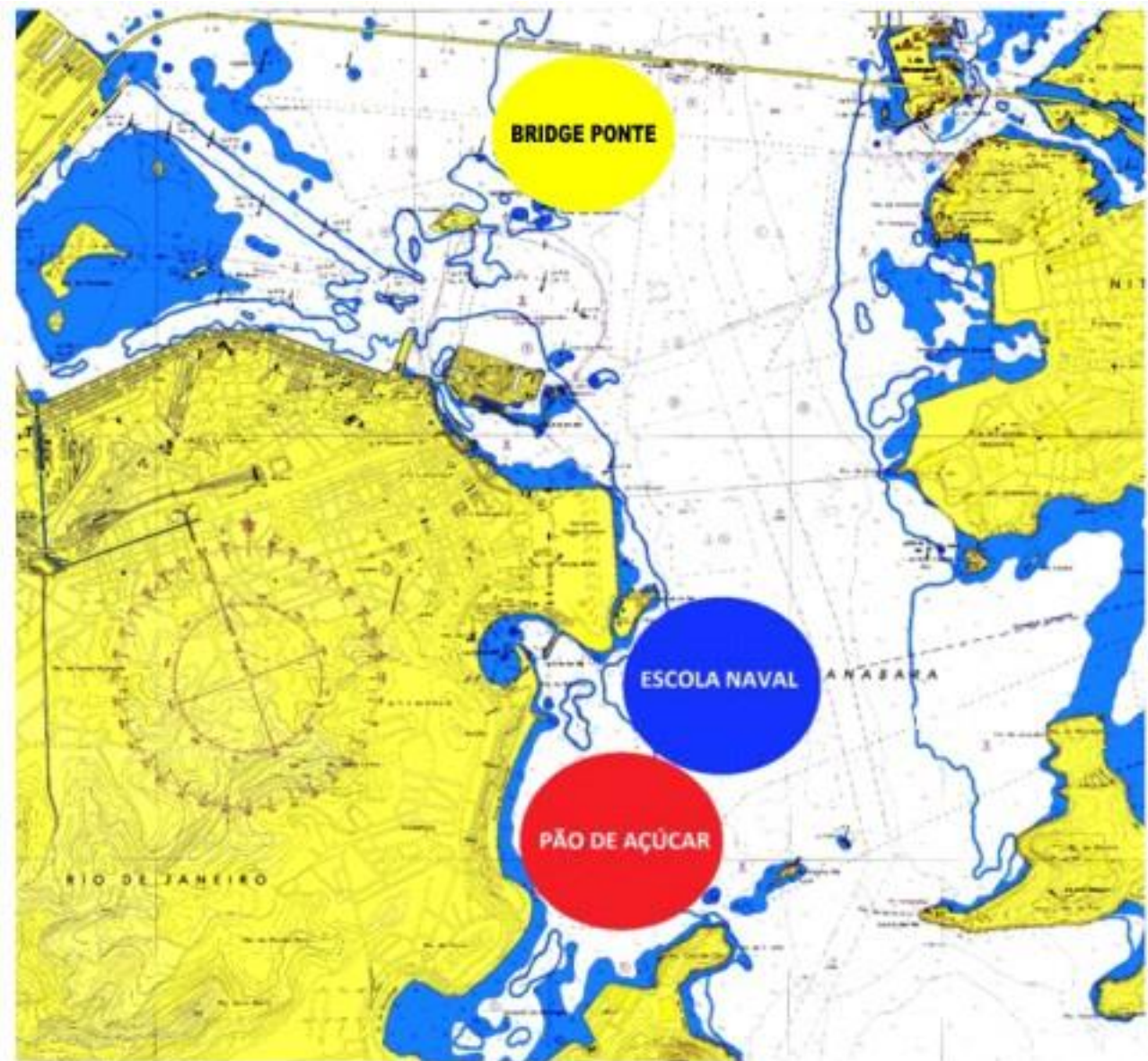
## **27. [NP] [DP] ADVERTISEMENT:**

27.1. Boats and athletes should display advertising supplied by the organizing authority as per ISAF Regulation 20.4.



# *Yacht Club do Rio de Janeiro*

## ANNEX 1 RACE AREAS







# State Club de Rio de Janeiro

## ANNEX 2 COURSES

<p><b>I</b></p> <p>Course: Inner Trapezoid</p> <table border="1"> <thead> <tr> <th>Signal</th> <th>Mark Rounding Order</th> </tr> </thead> <tbody> <tr> <td>I2</td> <td>Start - 1 - 4s/4p - 1 - 2 - 3p - Finish</td> </tr> <tr> <td>I3</td> <td>Start - 1 - 4s/4p - 1 - 4s/4p - 1 - 2 - 3p - Finish</td> </tr> <tr> <td>I4</td> <td>Start - 1 - 4s/4p - 1 - 4s/4p - 1 - 4s/4p - 1 - 2 - 3p - Finish</td> </tr> </tbody> </table>	Signal	Mark Rounding Order	I2	Start - 1 - 4s/4p - 1 - 2 - 3p - Finish	I3	Start - 1 - 4s/4p - 1 - 4s/4p - 1 - 2 - 3p - Finish	I4	Start - 1 - 4s/4p - 1 - 4s/4p - 1 - 4s/4p - 1 - 2 - 3p - Finish	<p><b>O</b></p> <p>Course: Outer Trapezoid</p> <table border="1"> <thead> <tr> <th>Signal</th> <th>Mark Rounding Order</th> </tr> </thead> <tbody> <tr> <td>O2</td> <td>Start - 1 - 2 - 3s/3p - 2 - 3p - Finish</td> </tr> <tr> <td>O3</td> <td>Start - 1 - 2 - 3s/3p - 2 - 3s/3p - 2 - 3p - Finish</td> </tr> <tr> <td>O4</td> <td>Start - 1 - 2 - 3s/3p - 2 - 3s/3p - 2 - 3s/3p - 2 - 3p - Finish</td> </tr> </tbody> </table>	Signal	Mark Rounding Order	O2	Start - 1 - 2 - 3s/3p - 2 - 3p - Finish	O3	Start - 1 - 2 - 3s/3p - 2 - 3s/3p - 2 - 3p - Finish	O4	Start - 1 - 2 - 3s/3p - 2 - 3s/3p - 2 - 3s/3p - 2 - 3p - Finish								
Signal	Mark Rounding Order																								
I2	Start - 1 - 4s/4p - 1 - 2 - 3p - Finish																								
I3	Start - 1 - 4s/4p - 1 - 4s/4p - 1 - 2 - 3p - Finish																								
I4	Start - 1 - 4s/4p - 1 - 4s/4p - 1 - 4s/4p - 1 - 2 - 3p - Finish																								
Signal	Mark Rounding Order																								
O2	Start - 1 - 2 - 3s/3p - 2 - 3p - Finish																								
O3	Start - 1 - 2 - 3s/3p - 2 - 3s/3p - 2 - 3p - Finish																								
O4	Start - 1 - 2 - 3s/3p - 2 - 3s/3p - 2 - 3s/3p - 2 - 3p - Finish																								
<p><b>LR</b></p> <p>Course: Windward / Leeward</p> <table border="1"> <thead> <tr> <th>Signal</th> <th>Mark Rounding Order</th> </tr> </thead> <tbody> <tr> <td>LR2</td> <td>Start - 1 - 4s/4p - 1 - 4p - Finish</td> </tr> <tr> <td>LR3</td> <td>Start - 1 - 4s/4p - 1 - 4s/4p - 1 - 4p - Finish</td> </tr> <tr> <td>LR4</td> <td>Start - 1 - 4s/4p - 1 - 4s/4p - 1 - 4s/4p - 1 - 4p - Finish</td> </tr> </tbody> </table>	Signal	Mark Rounding Order	LR2	Start - 1 - 4s/4p - 1 - 4p - Finish	LR3	Start - 1 - 4s/4p - 1 - 4s/4p - 1 - 4p - Finish	LR4	Start - 1 - 4s/4p - 1 - 4s/4p - 1 - 4s/4p - 1 - 4p - Finish	<p><b>LS</b></p> <p>Course: Windward/Leeward With Slalom Finish</p> <table border="1"> <thead> <tr> <th>Signal</th> <th>Mark Rounding Order</th> </tr> </thead> <tbody> <tr> <td>LS2</td> <td>Start - 1 - 4s/4p - 1 - 4p - S1 - S2 - S3 - Finish</td> </tr> <tr> <td>LS3</td> <td>Start - 1 - 4s/4p - 1 - 4s/4p - 1 - 4p - S1 - S2 - S3 - Finish</td> </tr> <tr> <td>LS4</td> <td>Start - 1 - 4s/4p - 1 - 4s/4p - 1 - 4s/4p - 1 - 4p - S1 - S2 - S3 - Finish</td> </tr> </tbody> </table>	Signal	Mark Rounding Order	LS2	Start - 1 - 4s/4p - 1 - 4p - S1 - S2 - S3 - Finish	LS3	Start - 1 - 4s/4p - 1 - 4s/4p - 1 - 4p - S1 - S2 - S3 - Finish	LS4	Start - 1 - 4s/4p - 1 - 4s/4p - 1 - 4s/4p - 1 - 4p - S1 - S2 - S3 - Finish								
Signal	Mark Rounding Order																								
LR2	Start - 1 - 4s/4p - 1 - 4p - Finish																								
LR3	Start - 1 - 4s/4p - 1 - 4s/4p - 1 - 4p - Finish																								
LR4	Start - 1 - 4s/4p - 1 - 4s/4p - 1 - 4s/4p - 1 - 4p - Finish																								
Signal	Mark Rounding Order																								
LS2	Start - 1 - 4s/4p - 1 - 4p - S1 - S2 - S3 - Finish																								
LS3	Start - 1 - 4s/4p - 1 - 4s/4p - 1 - 4p - S1 - S2 - S3 - Finish																								
LS4	Start - 1 - 4s/4p - 1 - 4s/4p - 1 - 4s/4p - 1 - 4p - S1 - S2 - S3 - Finish																								
<p><b>L</b></p> <p>Course: Windward / Leeward</p> <table border="1"> <thead> <tr> <th>Signal</th> <th>Mark Rounding Order</th> </tr> </thead> <tbody> <tr> <td>L2</td> <td>Start - 1 - 4s/4p - 1 - Finish</td> </tr> <tr> <td>L3</td> <td>Start - 1 - 4s/4p - 1 - 4s/4p - 1 - Finish</td> </tr> <tr> <td>L4</td> <td>Start - 1 - 4s/4p - 1 - 4s/4p - 1 - 4s/4p - 1 - Finish</td> </tr> </tbody> </table>	Signal	Mark Rounding Order	L2	Start - 1 - 4s/4p - 1 - Finish	L3	Start - 1 - 4s/4p - 1 - 4s/4p - 1 - Finish	L4	Start - 1 - 4s/4p - 1 - 4s/4p - 1 - 4s/4p - 1 - Finish	<p><b>IA</b></p> <p>Course: Same As Course I Except with Offset Mark 1A</p> <table border="1"> <thead> <tr> <th>Signal</th> <th>Mark Rounding Order</th> </tr> </thead> <tbody> <tr> <td>IA2</td> <td>Start - 1 - 1a - 4s/4p - 1 - 1a - 2 - 3p - Finish</td> </tr> <tr> <td>IA3</td> <td>Start - 1 - 1a - 4s/4p - 1 - 1a - 4s/4p - 1 - 1a - 2 - 3p - Finish</td> </tr> <tr> <td>IA4</td> <td>Start - 1 - 1a - 4s/4p - 1 - 1a - 4s/4p - 1 - 1a - 4s/4p - 1 - 1a - 2 - 3p - Finish</td> </tr> </tbody> </table> <p><b>LRA</b></p> <p>Course: Same as LR Except With Offset Mark 1a</p> <table border="1"> <thead> <tr> <th>Signal</th> <th>Mark Rounding Order</th> </tr> </thead> <tbody> <tr> <td>LRA2</td> <td>Start - 1 - 1a - 4s/4p - 1 - 1a - 4p - Finish</td> </tr> <tr> <td>LRA3</td> <td>Start - 1 - 1a - 4s/4p - 1 - 1a - 4s/4p - 1 - 1a - 4p - Finish</td> </tr> <tr> <td>LRA4</td> <td>Start - 1 - 1a - 4s/4p - 1 - 1a - 4s/4p - 1 - 1a - 4s/4p - 1 - 1a - 4p - Finish</td> </tr> </tbody> </table>	Signal	Mark Rounding Order	IA2	Start - 1 - 1a - 4s/4p - 1 - 1a - 2 - 3p - Finish	IA3	Start - 1 - 1a - 4s/4p - 1 - 1a - 4s/4p - 1 - 1a - 2 - 3p - Finish	IA4	Start - 1 - 1a - 4s/4p - 1 - 1a - 4s/4p - 1 - 1a - 4s/4p - 1 - 1a - 2 - 3p - Finish	Signal	Mark Rounding Order	LRA2	Start - 1 - 1a - 4s/4p - 1 - 1a - 4p - Finish	LRA3	Start - 1 - 1a - 4s/4p - 1 - 1a - 4s/4p - 1 - 1a - 4p - Finish	LRA4	Start - 1 - 1a - 4s/4p - 1 - 1a - 4s/4p - 1 - 1a - 4s/4p - 1 - 1a - 4p - Finish
Signal	Mark Rounding Order																								
L2	Start - 1 - 4s/4p - 1 - Finish																								
L3	Start - 1 - 4s/4p - 1 - 4s/4p - 1 - Finish																								
L4	Start - 1 - 4s/4p - 1 - 4s/4p - 1 - 4s/4p - 1 - Finish																								
Signal	Mark Rounding Order																								
IA2	Start - 1 - 1a - 4s/4p - 1 - 1a - 2 - 3p - Finish																								
IA3	Start - 1 - 1a - 4s/4p - 1 - 1a - 4s/4p - 1 - 1a - 2 - 3p - Finish																								
IA4	Start - 1 - 1a - 4s/4p - 1 - 1a - 4s/4p - 1 - 1a - 4s/4p - 1 - 1a - 2 - 3p - Finish																								
Signal	Mark Rounding Order																								
LRA2	Start - 1 - 1a - 4s/4p - 1 - 1a - 4p - Finish																								
LRA3	Start - 1 - 1a - 4s/4p - 1 - 1a - 4s/4p - 1 - 1a - 4p - Finish																								
LRA4	Start - 1 - 1a - 4s/4p - 1 - 1a - 4s/4p - 1 - 1a - 4s/4p - 1 - 1a - 4p - Finish																								